

PART OF THE SE.1/4, OF SECTION 29, T.6N., R.2W., S.L.B. & M.

330

# GIBSON ESTATES

IN WEBER COUNTY

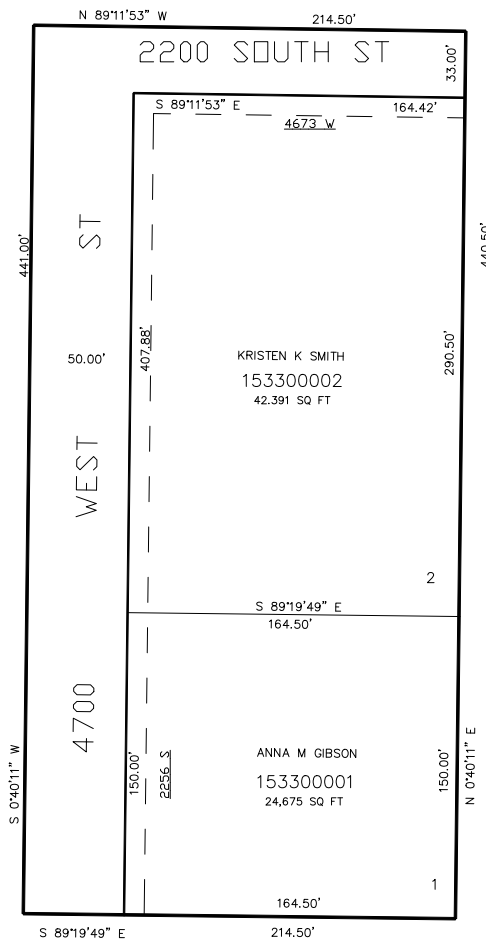
TAXING UNIT: 516

SCALE 1" = 50'

SEE PAGE 79-1

SEE PAGE 79-1

SEE PAGE 79-1



SEE PAGE 273

FOR COMPLETE ENG DATA SEE  
ORIGINAL DEDICATION PLAT IN  
BOOK 56, PAGE 86 OF RECORDS.

10' UTILITY & DRAINAGE EASEMENTS EACH  
SIDE OF PROPERTY LINES AS INDICATED  
BY DASHED LINES EXCEPT AS OTHERWISE  
SHOWN.